



# CATALOGUE 2014 GASES & SMOKES ANALYSERS



# TECHNICAL FEATURES

## INFRARED EXHAUST GAS ANALYSER

### MEASUREMENTS SPECIFICATIONS

Accuracy: OIML class 0 - R99 ed. 2008 where applicable;  
Zero setting: automatic (automatic frequency);  
Calibration: automatic (frequency according to the regulations);  
Gas flow: min. 6 litres/minute;  
Condense separator: 1 condensate, 1 coalescent and 1 plastic filters;  
Condense discharge : automatic and continuous;  
Flow check: automatic and continuous;  
Operating voltage: from 110 to 230 Vac A.S.;  
Absorbed power: 40 W max  
Control voltage: automatic and continuous (alarm at min. or max. V);  
Leak test: Automatic;  
Diagnosis of the functionality of carburetion: Gasoline, LPG, CNG  
Measurement of the LAMBDA coefficient

### ENVIRONMENT OPERATING

Operative temp.: from 5 to 40 °C;  
Relative Humidity : < 90% without condense  
Atmospheric pressure: from 700 to 1100 hPa  
Altitude: < 2000 m;  
Level of pollution 2 (EN 61010-1);  
Storage temp.: from -20 to +50 °C;

### MEASUREMENTS SPECIFICATIONS

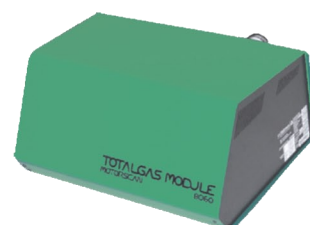
Accuracy: OIML class 0 - R99 ed. 2008 where applicable;  
Zero setting: automatic (automatic frequency);  
Calibration: automatic (frequency according to the regulations);  
Gas flow: min. 6 litres/minute;  
Condense separator: 1 condensate, 1 coalescent and 1 plastic filters;  
Condense discharge : automatic and continuous;  
Flow check: automatic and continuous;  
Operating voltage: from 13,8 V, (nominal);  
Absorbed power: 30 W  
Internal lithium battery - 3 hours autonomy  
Leak test: Automatic;  
Diagnosis of the functionality of carburetion: Gasoline, LPG, CNG  
Measurement of the LAMBDA coefficient

### ENVIRONMENT OPERATING

Operative temp.: from 5 to 40 °C;  
Relative Humidity : < 90% without condense  
Atmospheric pressure: from 700 to 1100 hPa  
Altitude: < 2000 m;  
Level of pollution 2 (EN 61010-1);  
Storage temp.: from -20 to +50 °C;



**8050 / 8060**



**8070 / 8071**



# MODULES

## 8050 TOTALGAS

## 8060 MODULE

8050/60

+ 8047

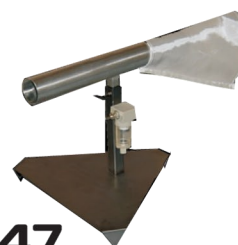


## INFRARED EXHAUST GAS ANALYSER

**8050** Exhaust gas analyser CO, CO corr., CO<sub>2</sub>, HC, O<sub>2</sub> with display and printer

**8060** Exhaust gas analyser CO, CO corr., CO<sub>2</sub>, HC, O<sub>2</sub>

**8055** Electrochemical sensor for NO measurements (optional)



### 8047

Probes Kit for gas analysis for motorbikes, motorcycles, ATV ( 2, 3,4 wheels).



### 8024

Hand held terminal with keyboard, for data entering and automatic procedures piloting.

**Totalgas 8050/8060** represent the latest generation of Motorscan gas analyzers, known for their reliability, they meet MID approval (Directive 2004/22/EC) and MCTC Net2 requirements.

Thanks to their modularity, they are in compliance with all regulations and can be used in all of the world.

MOD.8050 is approved according to MID regulations requirements.

MOD.8047 kit optional to carry out the exhaust gas analysis on motorbikes, motorcycles and ATV vehicles ( 2,3,4 wheels).

#### Connections

Bluetooth kit 10001/96 max 100 mt .

MOD.8050: rpm and temperature detection visible on the display.

MOD.8060: must be connected to PC with software dedicated, to MULTEX or directly to MOD.9010 and 9011 (with MOD.8024 optional ).

#### GAS



### 7950

Trolleys

#### GAS & SMOKE



### 7951

### PC+SW



Connect to PC through dedicated software .

#### Configurations and connections of the gas analyzers :

**8050** **8060**



STAND ALONE

CONNECTED TO MULTEX STATION MOD. 12000

PC CONNECTED WITH DEDICATED SW

CONNECTED TO MOD. 8024

UNITS SMOKE (9010/9011) CONNECTED + MOD. 8024

### 12000

MULTEX with trolley, SW, and printer.



# PORTABLE MODULES

## 8070 TOTALGAS

## 8071 MODULE

8070/71



+ 8047



## PORTABLE INFRARED EXHAUST GAS ANALYSER

**8070** Exhaust gas analyser CO, CO corr., CO<sub>2</sub>, HC, O<sub>2</sub> with display and printer

**8071** Exhaust gas analyser CO, CO corr., CO<sub>2</sub>, HC, O<sub>2</sub>

**8055** Electrochemical sensor for NO measurements (optional)



**8047**

Probes Kit for gas analysis for motorbikes, motorcycles, ATV ( 2, 3,4 wheels).



**8024**

Hand held terminal with keyboard, for data entering and automatic procedures piloting.

**TOTALGAS 8070/8071** represent the portable version of Motorscan gas analyzers, known for their reliability, they meet MID approval (Directive 2004/22/EC) and MCTC Net2 requirements.

Thanks to their modularity, they are in compliance with all regulations and can be used in all of the world.

The portable analyzer MOD.8070, connected to the hand held MOD.8024 allows a precise analysis of on-road dynamics; MOD.8071 is connected to PC or MULTEX station .

MOD.8047 kit optional to carry out the exhaust gas analysis on motorcycle, motorbikes and ATV vehicles ( 2,3,4 wheels).

### Connections

Bluetooth kit 10001/96 max 100 mt .

MOD.8070: rpm and temperature detection visible in the display.

MOD.8071: must be connected to PC with software dedicated, to MULTEX or directly to MOD.9010 and 9011 (with MOD.8024 optional ).



**PC+SW**

Connect to PC through dedicated software .

### Configurations and connections of the gas analyzers :

8070	8071	
<input checked="" type="checkbox"/>	<input type="checkbox"/>	STAND ALONE
<input checked="" type="checkbox"/>	<input checked="" type="checkbox"/>	CONNECTED TO MULTEX STATION MOD. 12000
<input checked="" type="checkbox"/>	<input checked="" type="checkbox"/>	PC CONNECTED WITH DEDICATED SW
<input checked="" type="checkbox"/>	<input type="checkbox"/>	CONNECTED TO MOD. 8024
<input checked="" type="checkbox"/>	<input type="checkbox"/>	UNITS SMOKE (9010/9011) CONNECTED + MOD. 8024

**12000**

MULTEX with trolley, SW, and printer.



# MODULES

## 9001 EUROSMOKE 9011 MODULE

9001 / 9011 + 9200 KIT SMOKE



### SMOKE METERS FOR DIESEL EMISSION TESTING

- 9001** Independent smoke meter for diesel emissions testing with printer, MOD.8024 remote control, RS 232 output and MOD.9501 roll-stand.
- 9011** Smoke meter (chamber) for diesel emissions testing with RS 232 output and stand



### 9200

Test emissions Kit for HEAVY VEHICLES .



### 8024

Hand held terminal with keyboard, for data entering and automatic procedures piloting.

### STAND

Stand for mod. 9011



### 9501

Roll-stand for mod. 9001

**9001/9011 EUROSMOKE** for diesel emission testing approved according to the MCTC Net standards and in compliance with MCTC Net2. Thanks to their modularity they are prepared to the configuration for all current regulations and can be used in all of the world. 9001 EUROSMOKE, connected to the hand held MOD.8024 is equipped with a thermic printer and roll-stand MOD.9501.

9011 EUROSMOKE MODULE is connected to Multex Station, or PC via SW 7102, or gas analyzer (MOD.8020 and MOD.8050) when equipped with optional hand held MOD.8024. MOD.9200 Kit (optional), to test heavy vehicles.

**Includes:**

- MOD.10001/96 kit bluetooth (max 100 mt.)
- RPM and temperature detection.
- Software management mode MCTC NET DIR.

**Configurations and smoke meters connections according to use:**

9001	9011	
<input checked="" type="checkbox"/>	<input type="checkbox"/>	STAND ALONE
<input checked="" type="checkbox"/>	<input checked="" type="checkbox"/>	CONNECTED TO MULTEX STATION MOD.12000
<input checked="" type="checkbox"/>	<input checked="" type="checkbox"/>	PC CONNECTED WITH DEDICATED SW
<input checked="" type="checkbox"/>	<input type="checkbox"/>	CONNECTED TO MOD. 8024
<input type="checkbox"/>	<input checked="" type="checkbox"/>	UNITS SMOKE (8020/8050) CONNECTED + MOD. 8024



### PC+SW

Connect to PC through dedicated software .

### 12000

MULTEX with trolley, SW, and printer.



# PORTABLES MODULES

## 9020 EUROSMOKE

## 9021 MODULE

9020/9021 + 9200 KIT SMOKE



## SMOKE METERS FOR DIESEL EMISSION TESTING

**9020** Independent portable smoke meter for diesel emissions testing with printer, MOD.8024 remote control, RS 232 output and MOD. 9501 roll-stand.

**9021** Smoke meter (chamber only) for diesel emissions testing with RS 232 output MOD.9501 roll-stand.



### 9200

Test emissions Kit for HEAVY VEHICLES .



### 8024

Hand held terminal with keyboard, for data entering and automatic procedures piloting.



The battery is not provided.

**9020/9021 EUROSMOKE MODULE** for diesel emission testing approved according MCTC Net in compliance with MCTC Net2. Thanks to their modularity they are prepared to the configuration for all current regulations and can be used in all of the world.

9020 EUROSMOKE , connected to the hand held MOD.8024 is equipped with a thermic printer and roll-stand MOD.9501.

9021 EUROSMOKE MODULE is connected by cable or Bluetooth to Multex Station, PC via SW 7102, or gas analyzer (MOD.8020 and MOD.8050) when equipped with optional hand held MOD.8024.

MOD.9200 Kit (optional), to test of heavy vehicles.

MOD.10001/ 96 kit bluetooth (max 100 mt.).

RPM and temperature detection.

Software management mode MCTC NET DIR.

**Configurations and smoke meters connections according to use:**

**9020 9021**



STAND ALONE  
 CONNECTED TO MULTEX STATION MOD.12000  
 PC CONNECTED WITH DEDICATED SW  
 CONNECTED TO MOD. 8024  
 UNITS SMOKE (8020/8050) CONNECTED + MOD. 8024



### PC+SW

Connect to PC through dedicated software .



### 12000

MULTEX with trolley, SW, and printer.

# TECHNICAL FEATURES

## SMOKE METERS FOR DIESEL EMISSION TESTING

### MEASUREMENTS SPECIFICATIONS

Flow: partial and continuous;  
Re-setting: automatic with solenoid valve;  
Emitter: Green LED; Receiver: Photodiode  
Chamber length 430 +/- 0.5 mm;  
Warm-up time: 14 min .;  
Chamber temperature: 90 ° C +/- 2 ° C;  
Response Time: ≤0.99 sec .;  
Cleaning the chamber: automatic with dedicated pump;  
Operative voltage: 110 to 230 Vac S.A. 50/60 Hz +/- 2%;  
Power consumption: 160 W max  
RS232 output for PC  
USB Output  
CPC connectors for input and Clamp Temperature /Probe Tachometer

### ENVIRONMENT OPERATING

Operating temperature: +5 to +40 ° C;  
Relative Humidity: ≤90% non-condensing  
Atmospheric pressure: 700 hPa to 1100  
Storage temperature: -15 to +60 ° C;

### DIMENSIONS AND WEIGHT

Dimensions 610x260x270  
Weight 7 Kg approx.

### MEASUREMENTS SPECIFICATIONS

Flow: partial and continuous;  
Re-setting: automatic with solenoid valve;  
Emitter: Green LED; Receiver: Photodiode  
Chamber length 430 +/- 0.5 mm;  
Warm-up time: 14 min .;  
Chamber temperature: 90 ° C +/- 2 ° C;  
Response Time: ≤0.99 sec .;  
Cleaning the chamber: automatic with dedicated pump;  
Operative voltage: 12 Vdc S.A. nominal  
Power consumption: 200 W max  
RS232 output for PC  
USB Output  
CPC connectors for input and Clamp Temperature /Probe Tachometer

### ENVIRONMENT OPERATING

Operating temperature: +5 to +40 ° C;  
Relative Humidity: ≤90% non-condensing  
Atmospheric pressure: 700 hPa to 1100  
Storage temperature: -15 to +60 ° C;

### DIMENSIONS AND WEIGHT

Dimensions 610x260x270  
Weight 7 Kg approx.



**9001 / 9011**



**9020 / 9021**

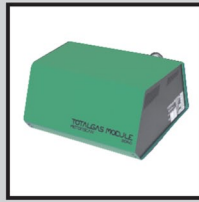




Smoke and gas analysis modules can be also used in connection with MULTEX and PC with dedicated software



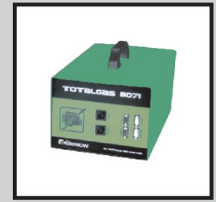
8050



8060



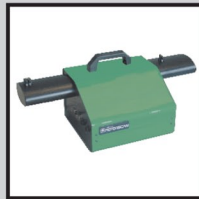
8070



8071



9001



9011



9020



9021



**MULTEX**

Command work station for gas/smoke analysers and vehicle inspection & safety (trolley, SW and printer included).



The manufacturer reserves the right to make any changes to the above mentioned specifications without prior notice.



**EOS S.r.l.** Via Monte Aquila, 2 - Loc. Corcagnano  
 43124 Parma (Italy) Tel. +39 0521 631411 r.a. - Fax +39 0521 631414  
[info@motorscan.com](mailto:info@motorscan.com) - [www.motorscan.com](http://www.motorscan.com)

